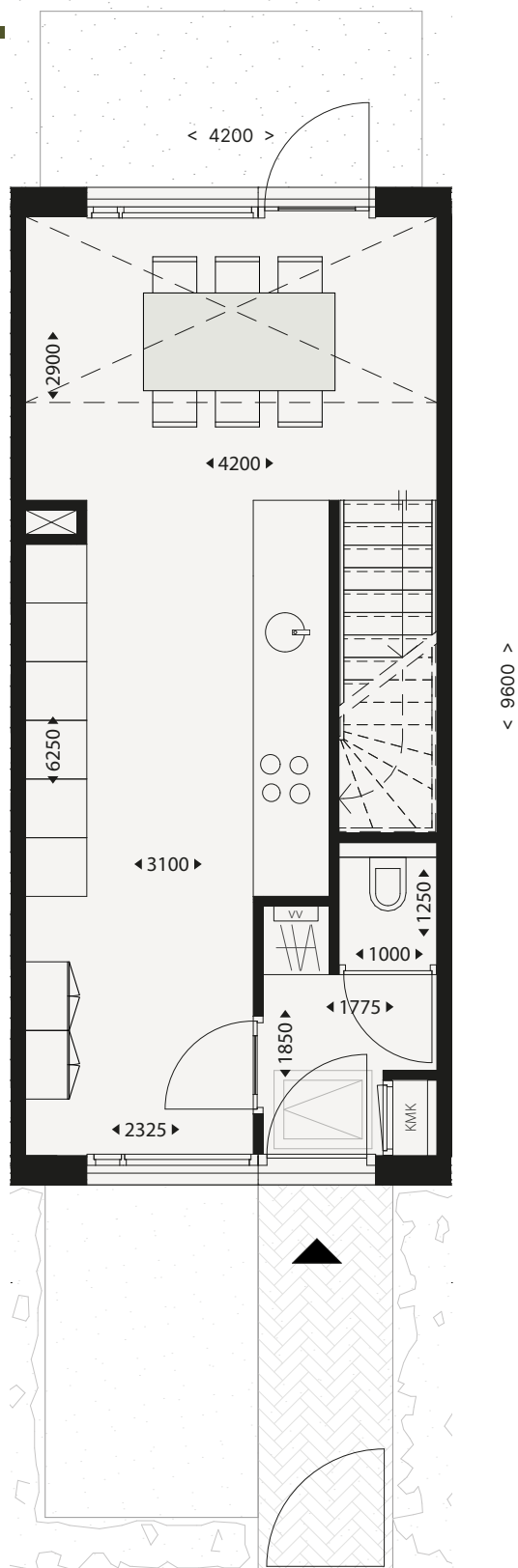



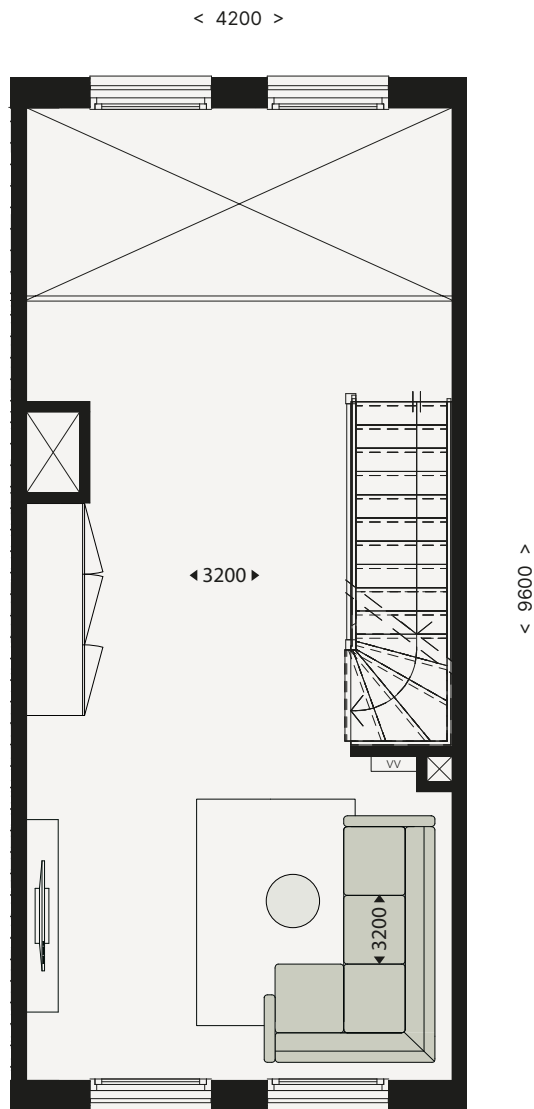
# STADSWONING 4-LAAGS




## BEGANE GROND

<p>Bnr. 2 t/m 7</p>	<p>Gebruiksoppervlakte: ca. 152 m<sup>2</sup>  Aantal slaapkamers: 4</p>	<p>Woonkeuken: ca. 31,1 m<sup>2</sup>  Entree: ca. 3,6 m<sup>2</sup>  Toilet: ca. 1,3 m<sup>2</sup>  Voortuin: ca. 18 m<sup>2</sup></p>	<p>Schaal 1:75</p> 
---------------------	--	---	--

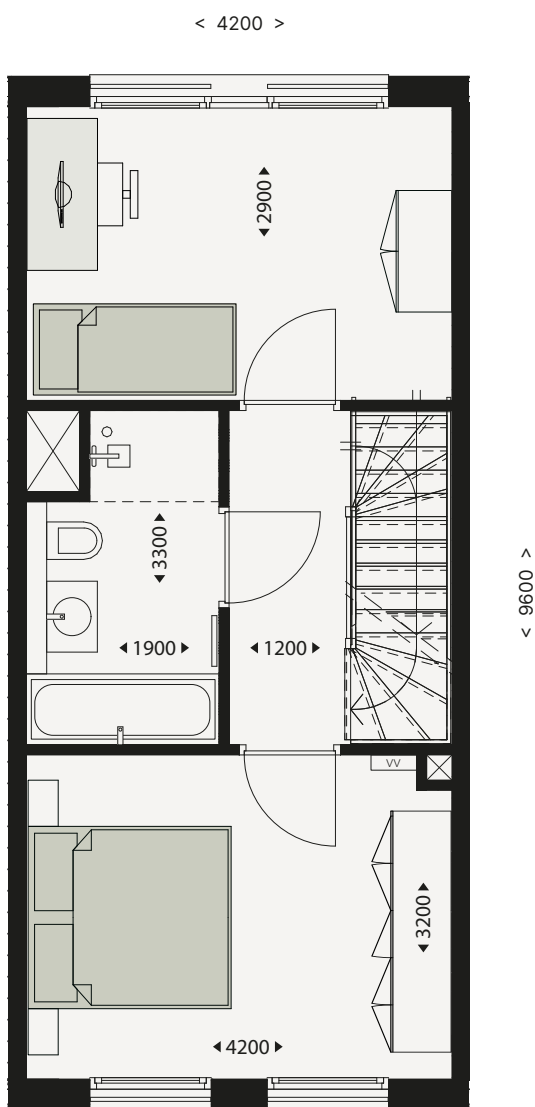
# BLEND




## EERSTE VERDIEPING

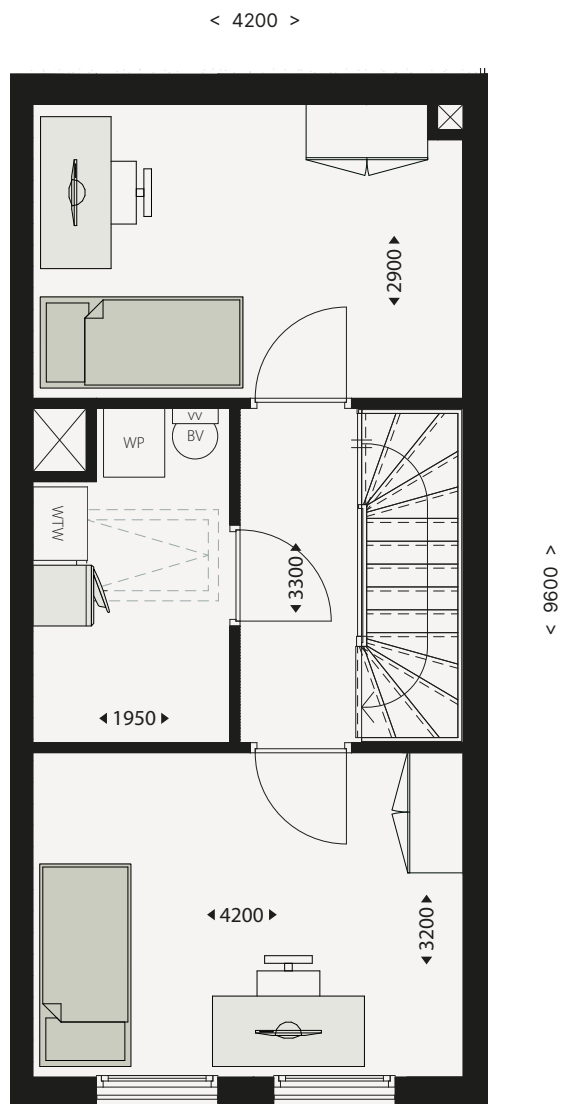
Bnr. 2 t/m 7	Gebruiksoppervlakte: ca. 152 m <sup>2</sup> Aantal slaapkamers: 4	Woonkamer: ca. 31,7 m <sup>2</sup>	Schaal 1:75 
--------------	--	------------------------------------	--

# STADSWONING 4-LAAGS\_




## TWEEDE VERDIEPING

<p><b>Bnr. 2 t/m 7</b></p>	<p><b>Gebruiksoppervlakte:</b> ca. 152 m<sup>2</sup>  <b>Aantal slaapkamers:</b> 4</p>	<p>Slaapkamer 1: ca. 13,4 m<sup>2</sup>  Slaapkamer 2: ca. 12,2 m<sup>2</sup>  Badkamer: ca. 5,7 m<sup>2</sup>  Hal: ca. 7,3 m<sup>2</sup></p>	<p><b>Schaal 1:75</b></p> 
----------------------------	--	--	---



## DERDE VERDIEPING

<p><b>Bnr. 2 t/m 7</b></p>	<p><b>Gebruiksoppervlakte:</b> ca. 152 m<sup>2</sup>  <b>Aantal slaapkamers:</b> 4</p>	<p>Slaapkamer 3: ca. 12,2 m<sup>2</sup>                  Slaapkamer 4: ca. 13,3 m<sup>2</sup>                  Technische ruimte/berging: ca. 3,6 m<sup>2</sup>                  Hal: ca. 3,9 m<sup>2</sup></p>	<p><b>Schaal 1:75</b></p> 
----------------------------	--	---	---